



1  
987 East Lagoon (124-9), Roosevelt, Utah 84066 – Phone: (435) 722-1736  
Antonio A. Arce, UB-TAH Project Coordinator - E-Mail: antonioa@ext.usu.edu

Website: [www.uintahbasintah.org](http://www.uintahbasintah.org)

---

## FREE TEACHER'S GUIDE

Uintah Basin Teaching American History Project (UB-TAH)

### The Use of 3-D Maps with K-12 Students

Sponsored by

[www.uintahbasintah.org](http://www.uintahbasintah.org)

Educational Material/Non Commercial

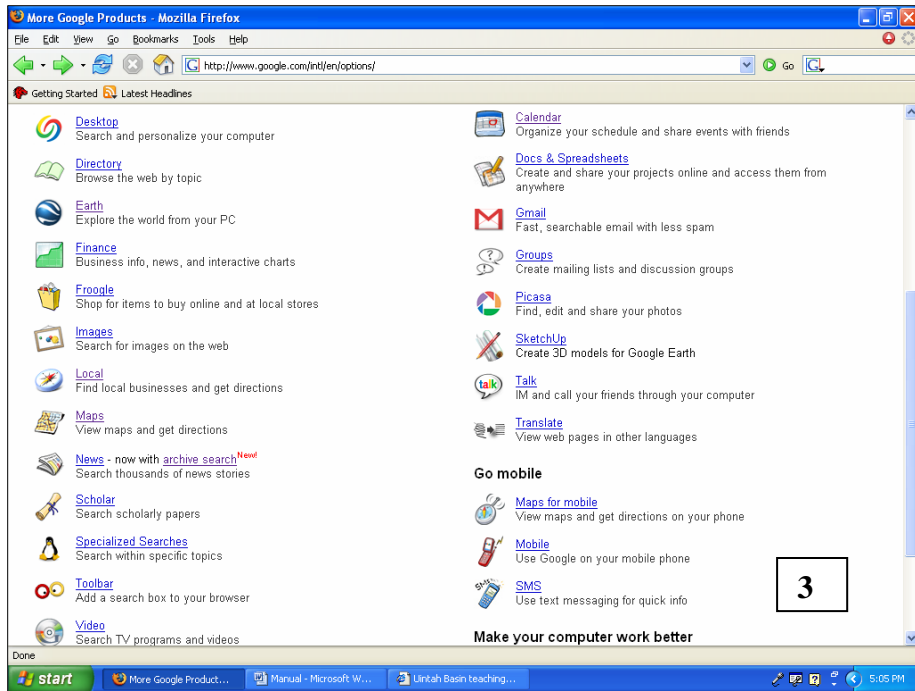
PLEASE, BEFORE YOU LEAVE THE CLASSROOM FILL OUT THE UB-TAH EVALUATION FORM

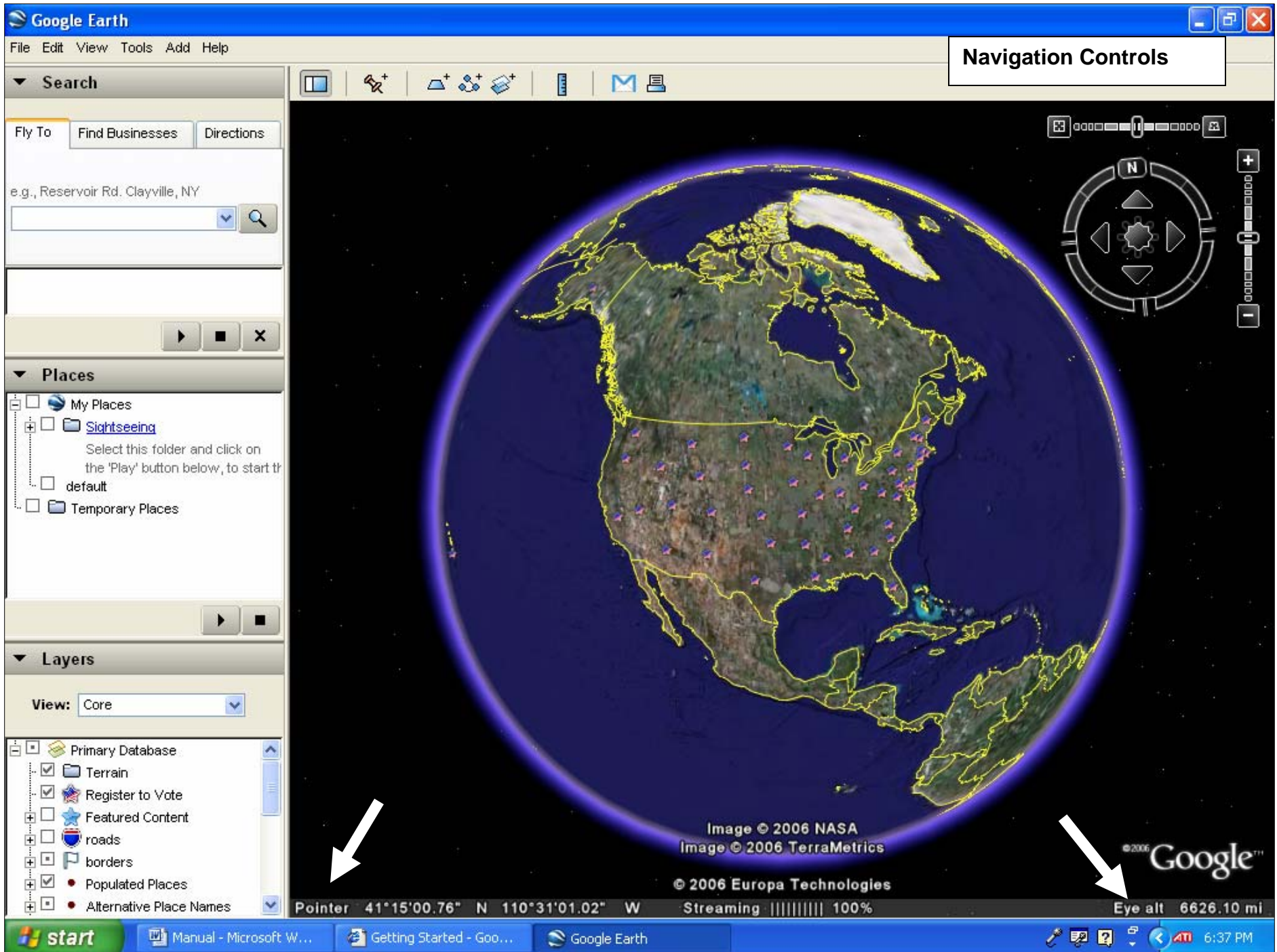
Educational Material/Non Commercial

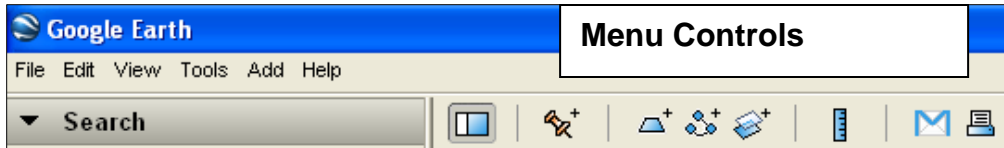
## "The use of Three-dimensional Maps in Social Studies Classrooms"

**STEPS:**

1. Go to [www.google.com](http://www.google.com)
2. Go to "more" + "even more"
3. Look in the left toolbars "Earth"
4. Go to "get Google Earth" FREE VERSION
5. Go to "Download Google Earth"
6. Click Save in the new panel
7. Install the program

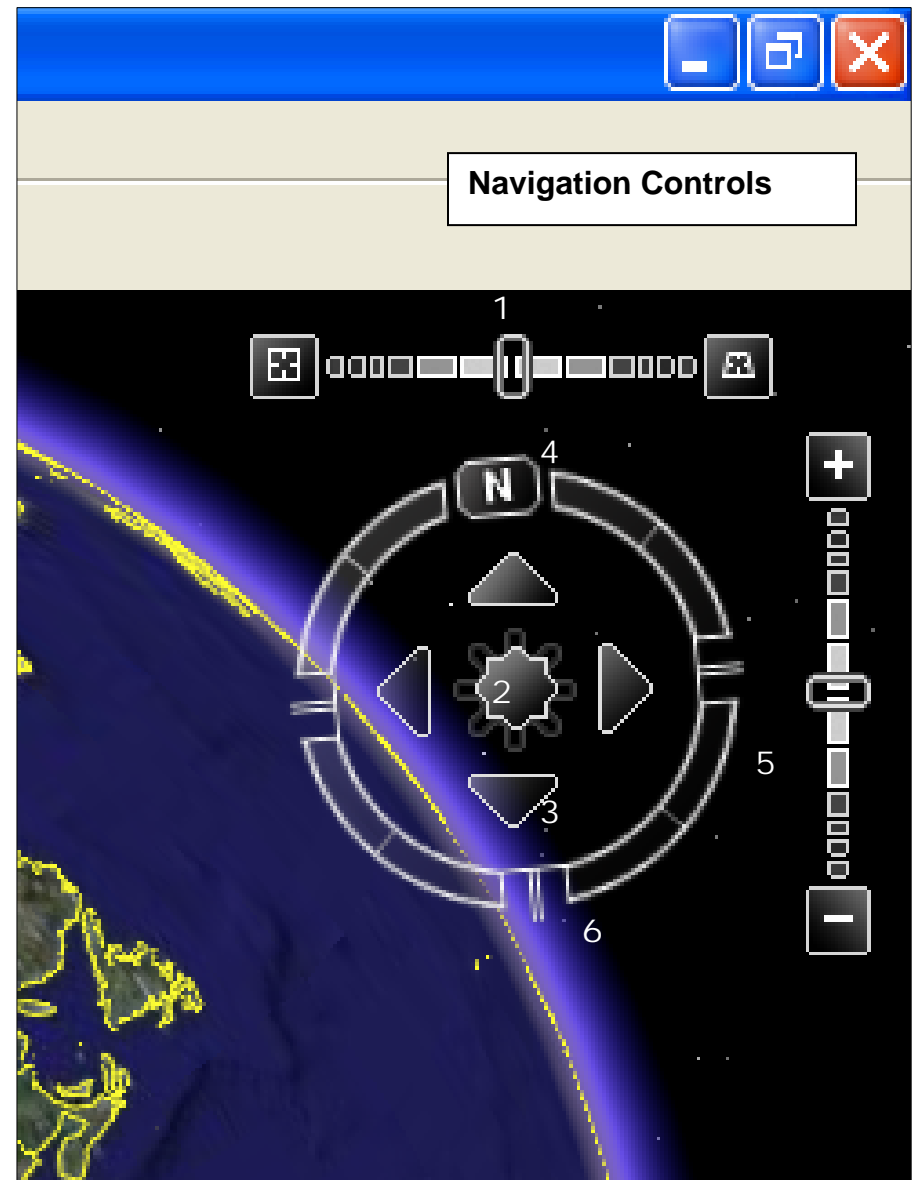






1. Use the tilt slider to tilt the terrain toward a horizon view. Move the slider to the left for a top-down view or to the right for a horizon view. Click the icons at the end of the slider to reset the tilt all the way to a top-down view or to a horizon view.
2. Use the joystick to move the center point of the view down, up, right or left. Click the center, hold the mouse button, and move in any direction.
3. Click the direction arrows to move the view in the direction you wish.
4. Click the north up button to reset the view so that north is at the top of the screen.
5. Use the zoom slider to zoom in or out (+ to zoom in, - to zoom out). Click the icons at the end of the slider to reset the zoom all the in or out.
6. Click and drag the navigation ring to rotate the view.

**Source:** [www.google.com](http://www.google.com)



**INSTRUCTIONS:**

1. Repeat instructions given in page 2 until step 3,
2. In step 3, select "Picasa"
3. Click "Free Download"

"Picasa" will help you to enhance your maps



